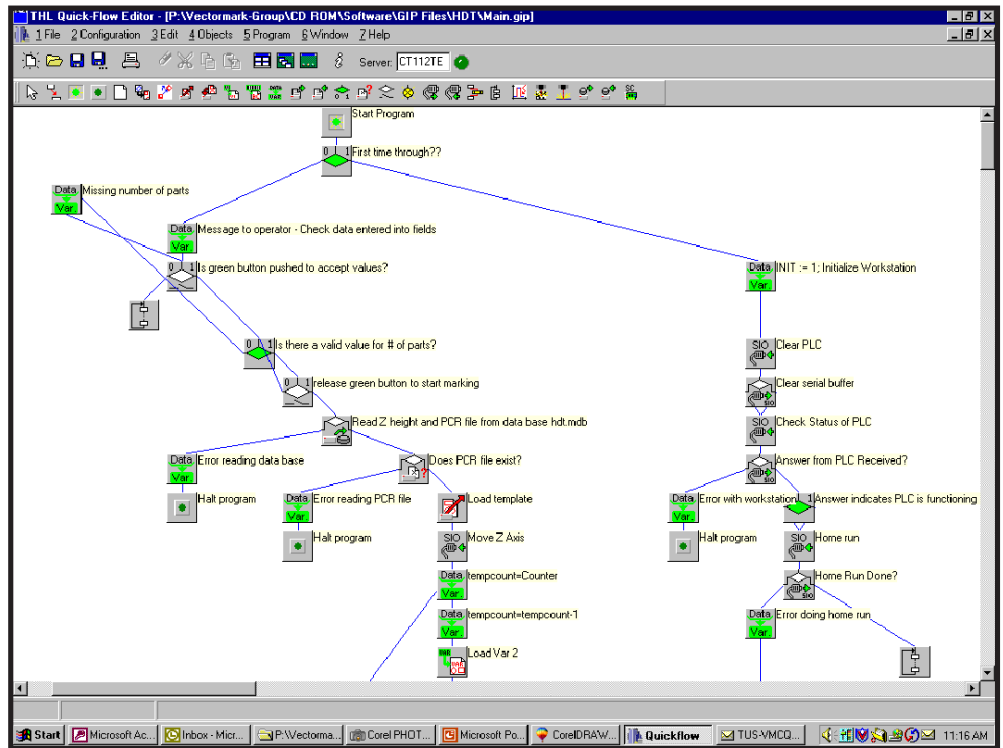


# VectorMark® Quickflow Software

The Quickflow software option on TRUMPF VectorMark laser marking systems allows you to maximize the potential of your marking operation by reading real time production data from many sources, marking your product with a unique code, and then uploading all information to your part history database, for the ultimate in quality control and product traceability.

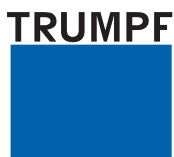
Quickflow software is a visual programming platform which allows you to drag and drop icons into a workspace, creating a flow chart which represents your production process. This flow chart actually becomes your software program.



Quickflow provides an easy to use visual programming system for controlling the flow of products through your marking area. Unique part identification yields the ultimate in quality control and product traceability.

Standard VectorMark I/O hardware available within Quickflow:

- Internal Canbus and open interface architecture for rapid and easy data acquisition
- 24 optically isolated switch inputs
- 16 switch outputs
- Up to 9 RS-232 serial ports
- 4-20 mA loop
- Parallel interface
- PC - Ethernet Network Connection, 10/100 Mbit, RJ-45 connector
- 56k Analog Modem connection
- Profibus (2001)



**North American Headquarters**  
**TRUMPF Inc.**  
3 Johnson Avenue  
Farmington, CT 06032  
Tel: 877.232.9334  
Fax: 860.409.0855  
[www.VectorMark.com](http://www.VectorMark.com)

TRUMPF Inc.  
Laser Technology Center  
47809 Galleon Drive  
Plymouth Township, MI 48170  
Tel: 734.354.9770  
Fax: 734.354.9769

TRUMPF Inc.  
West Coast Technology Center  
47273 Fremont Blvd.  
Fremont, CA 94538-9689  
Tel: 510.657.2657  
Fax: 510.657.2866

TRUMPF Canada  
118-2222 S. Sheridan Way  
Mississauga, ON L5J 2M4  
Tel: 800.306.1077  
Fax: 905.823.2212